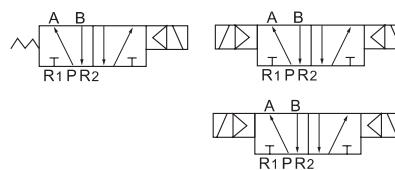


MVSC-200-4E1

## Solenoid valve MVSC series

Symbol:



### How to order

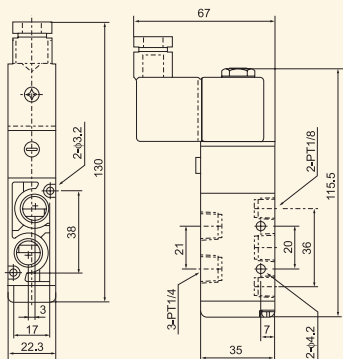
| MVSC        | 220            | -                                      | 4E2  | C  | AC110V |
|-------------|----------------|--|--|--|--------|
| Series code | Body size 22mm | Coil 4E1: single coil 4E2: double coil | Position Nil: two position C: three position, midst closed type P: three position, midst exhaust type R: three position, midst pressure type | Voltage DC12V DC24V AC24V 50/60Hz AC110V 50/60Hz AC220V 50/60Hz AC380V 50/60Hz |        |

### Specification

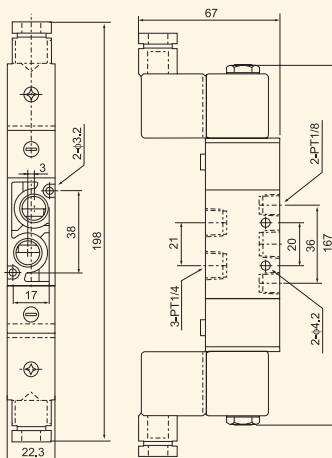
| Model                             |      | MVSC-220-4E1                              | MVSC-220-4E2 | MVSC-220-4E2C              | MVSC-220-4E2P | MVSC-220-4E2R |
|-----------------------------------|------|---|--------------|----------------------------|---------------|---------------|
| Fluid                             |      | Air (filtered through 40μ filter element) |              |                            |               |               |
| Action                            |      | Internally piloted acting type            |              |                            |               |               |
| Valve type                        |      | 2/5 way                                   |              | 3/5 way                    |               |               |
| Effective area (mm <sup>2</sup> ) |      | 14mm <sup>2</sup> (CV=0.78)               |              | 12mm <sup>2</sup> (CV=0.4) |               |               |
| Port size                         |      | In=out=exhaust=1/4″                       |              |                            |               |               |
| Lubrication                       |      | Not required                              |              |                            |               |               |
| Operating pressure                |      | 1.5~8.0kgf/cm <sup>2</sup>                |              |                            |               |               |
| Proof pressure                    |      | 10.5kg/cm <sup>2</sup>                    |              |                            |               |               |
| Ambient & fluid temperature       |      | 5~60℃                                     |              |                            |               |               |
| Voltage range                     |      | ± 10%                                     |              |                            |               |               |
| Power consumption                 |      | AC:4.5W DC:3.0W                           |              |                            |               |               |
| Insulation grade                  |      | F grade                                   |              |                            |               |               |
| Protection                        |      | IP65 (DIN 40050)                          |              |                            |               |               |
| Connection                        |      | Lead wire type or terminal type           |              |                            |               |               |
| Max. frequency                    |      | 5 cycle/sec.                              |              |                            |               |               |
| Min. response time                |      | 0.05 sec.                                 |              |                            |               |               |
| Weight (kg)                       |      |   |              |                            |               |               |
| Main parts material               | Body | Aluminum alloy                            |              |                            |               |               |
|                                   | Seal | NBR                                       |              |                            |               |               |

### Dimension

MVSC-220-4E1



MVSC-220-4E2



MVSC-220-4E2C

